



What you MUST KNOW about your HOME

Make sure EVERYONE in your household knows where the shutoffs are for water, gas & electric and how they work. In the event of a mechanical failure or emergency, shutting things down quickly could help protect your home & family. Post this list in a location that everyone knows, including babysitters & the neighbour checking your house while you are away. Take family members around to each location and explain how they work. Have our phone number handy:

Salmon Plumbing Heating & Air Conditioning **519-451-8910** Emergency Service 24 hours/day, 365 days/year

Important Mechanicals in your home



Location in your home

WATER in your home

It may look like this •

Be precise with your description so anyone can find these in an emergency. Included details: main floor/upper basement; exact room-e.g. furnace room; locations like rear of home.

Main Water supply to house

Shuts off water supply to the entire house in case of emergency or if plumbing fixtures don't have shutoff valves. Could also be ¼ turn valve. Usually in basement.



Toilet Shutoff

To turn off the water supply to a plumbing fixture, locate its shutoff valve. It is usually located under the toilet.



Shutoff for faucets (kitchen/basin)

Usually located under fixture (open the cabinet below). Could also be a ¼ turn valve (Turn perpendicular to pipe).



Access panels: Can't find a shutoff? They may be hidden behind access panels.

- For shower shutoffs
- For water meters in finished rooms
- For outside water taps



Emergency: 519-451-8910



Shutoff for outside water taps Hose should be removed in fall & inside tap turned off. Unscrew cap on side of valve and open outside tap. After water drains from line, replace cap securely.



- LOOK UP • Usually in basement ceiling near location of outside faucet

Sump pump & discharge location

Be aware of how often your pump cycles. Make sure pit is free of dirt, stones, debris that can get caught in impeller.



Do you have a battery backup for your sump pump?

If your main pump fails, you risk flooding your finished basement causing thousands of \$\$\$\$ damage without a backup system.



Protect your home from potential **flooding!!**

Emergency: call 519-451-8910



Heating/Cooling

It may look like this •

Be precise with your description so anyone can find these in an emergency. Included details: main floor/upper basement; exact room-e.g. furnace room; locations like rear of home.

Electrical panel

Important circuits should be labelled (air conditioner, furnace, sump pump, fridge, & freezer). Whether breaker or fuses, most should be 15 amps. If not, have it checked by a qualified electrician.



Breaker for Furnace & AC

Check if these breakers have been tripped or blown if the furnace or air conditioner is not operating.



Emergency: call 519-451-8910



Natural Gas Meter

Keep free of snow & ice, especially the vent termination of the service regulator on left side (upstream) of meter



IMPORTANT Safety CONCERN:
If the natural gas has been turned off, **DO NOT TURN BACK ON by yourself.** Only a qualified gas fitter must do so, to confirm the operation of ALL PILOT LIGHTS & gas appliances once the gas valve is turned on.

Furnace shutoff switch

Often at doorway of furnace room, or

•LOOK UP•

May be located on ceiling of furnace room



Intake/exhaust vent for furnace

LOOK OUTSIDE

These MUST be free of snow or debris for your SAFETY!!!

Furnace can't operate if these are blocked

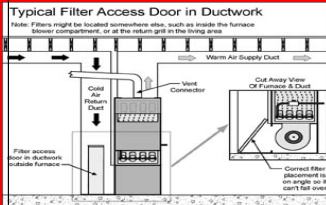


Emergency: 519-451-8910



Furnace filter location

A clogged filter affects the furnace performance and safety!!



Water heater: Gas & Water shutoffs

Gas shutoff: on piping at heater-turn handle perpendicular to pipe to shutoff
Water shutoff: on cold water line above heater



Water shutoff located on cold pipe above heater. Gas shutoff located on piping at heater. Turn handle perpendicular to piping to turn off.

Intake/exhaust vent for water heater:

LOOK OUTSIDE

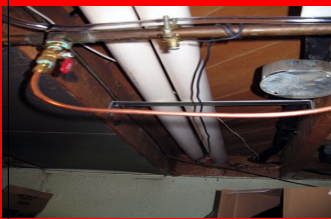
These MUST be free of snow or debris for your SAFETY!!!



Equipment will not operate if exhaust is plugged with snow

Humidifier-water shutoff and bypass damper & control:

Open by-pass damper in fall & close before summer (may be ¼ turn type).



Emergency: call 519-451-8910

